

WE St

WEST AUCKLAND BUSINESS

proudly supporting your West Auckland community

› Front Cover Feature

The Henderson Christmas Festival

› Business Reboot 2020/21

Apprenticeships – FAQ The Lowdown

› Community Feature

Bringing Vibrancy To Henderson Town Centre

brought to you by



West Liquor

**SAVE TIME
SHOP
ONLINE**



FREE DELIVERY WHEN YOU SPEND OVER \$100

SHOP.THETRUSTS.CO.NZ

IN THIS ISSUE

- 4 BUSINESS AFTER 5 (BA5) REPORT**
BUSINESS NETWORKING OPPORTUNITIES
- 6 CHAIRS REPORT**
KELVIN ARMSTRONG
- 8 FRONT COVER FEATURE**
THE HENDERSON CHRISTMAS FESTIVAL
- 11 FIND THE PERFECT BBQ & ENHANCEMENTS PROGRESSING**
MITRE 10 MEGA HENDERSON & WESTGATE
- 12 BUSINESS 2020/2021 REBOOT**
APPRENTICESHIPS - THE LOWDOWN
- 14 BRINGING LIFE, COLOUR & CHANGE TO THE STREETS**
OF THE HENDERSON TOWN CENTRE
- 15 HENDERSON TOWN CENTRE**
COMMUNITY-LED PLAN - UPDATE
- 16 RAY WHITE UNIVERSAL**
WHY ARE WE SEEING STRONG SALES RESULTS NOW?
- 18 LIFESTYLE - RECIPE**
BUTTERFLIED LEG OF LAMB
- 19 LIFESTYLE - WELLBEING**
SUN BURN, PROTECT YOURSELF THIS SUMMER
- 20 IF NOT NOW, WHEN?**
WITH HELLOWORLD TRAVEL HENDERSON
- 22 THANK YOU BREAKFAST FOR STAKEHOLDERS**
WITH WAITAKERE COLLEGE
- 23 BUSINESS LAW DESK**
INVESTING IN CRYPTOCURRENCY...
- 24 DECEMBER CHECKLIST**
WITH KINGS PLANT BARN
- 26+30 HAS NZ SLIPPED ON EVS?**
COURTESY EVS & BEYOND
- 27 KEEPING OUR VEHICLES RUNNING IN TOP SHAPE**
WITH NEW ZEALAND PERFORMANCE TUNING
- 28 DAVIS CLASSIC CAR SHOW**
RETURNS IN FEBRUARY



8. The Henderson Christmas Festival Returns To The Town Centre



14. Bringing life, colour & change to the streets of the Henderson Town Centre



20. If not now, when? With helloworld Travel Henderson

www.westaucklandbusiness.co.nz

CENTRAL PARK HENDERSON BUSINESS:

MEMBERSHIP ENQUIRIES

Phone: +64 2 74 904 260

133A Central Park Drive, Henderson, Auckland

P.O. Box 69-126 Glendene, Henderson, Auckland 0645

INFORMATION: ADVERTISING AND PUBLISHING

Garry Bates, Business Development

Mobile: 0274 904 260

E: garry@cphb.org.nz

W: westaucklandbusiness.co.nz/CPHBusiness/magazine

West Business magazine is produced by the Central Park Henderson Business Association Inc. (CPHBA). 3000 copies are distributed free to approximately 1600+ businesses in the Henderson-Massey Local Board business precincts, not including magazine stands in 'high traffic visitor' businesses.

Disclaimer – The views, editorial, and opinions expressed in this magazine belong solely to the author/contributor, and not necessarily to the CPHBA, West Auckland Business Club or other group or individual. All content in this magazine may be subject to copyright and should not be reproduced in any form without express written consent of the CPHBA.



WABC – @WestAKLBusinessClub
CPHB – @CPHBusiness



equipment CO₂ neutral
HEIDELBERG



THANK YOU TO MITRE 10 MEGA HENDERSON

In October attendees gathered at one of our iconic sponsors' establishments, Mitre 10 MEGA Henderson. A champion of our Association, Local Business, and very much the wider community.

We were again treated to wonderful hospitality and another of their great business card draws, featuring a weber BBQ as one of many.

What really exemplifies the company's work ethic is the service they provide to West Aucklanders. Mitre 10 MEGA's Dave Hargreaves - "There is absolutely no substitute for great customer service. We like to think that both our stores (Henderson and Westgate) are more than just a business, we believe in providing a superior level of service to the community." Dave and Elaine are great supporters of fund raisers for Clubs and Schools within the area.

The BA5 has a wonderful group of sponsors who are passionate about West business and making a difference in our community – Please return their support and SHOP LOCAL.

Central Park Henderson Business Assn. events subsidiary; the West Auckland Business Club (WABC) produces the Business after 5 (BA5) networking experiences.

Confirmed for February is BA5 Sponsor, Davis Funerals.

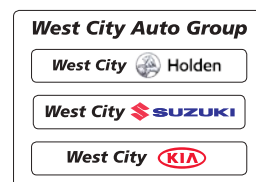
Photography: Jasmine Kunju (from BA5 sponsor, UHY Haines Norton).



BA5 SUPPORTING SPONSORS



giving back



ORGANISING A WORK FUNCTION?



**DELIVERED COLD TO
YOUR DOOR**



**GLASSWARE HIRE
AVAILABLE**



**FREE DELIVERY WHEN
YOU SPEND OVER \$100**

**USE CODE 'WORKSHOUT' AT CHECK OUT
WWW.SHOP.THETRUSTS.CO.NZ**

CONDITIONS:

Free delivery for orders over \$100 and free glassware hire for orders over \$500.
Excluding The Trusts Trade customers. B2B discount code of 15% excluding promotional items. Offer expires on 24/12/2020.



support west

CHAIRS REPORT

CPHBA held our AGM last month, ticking the boxes of the Business Improvement District (BID) compliance was no easy task for the BID newbies, fortunately we had been building the organisation towards BID status prior and had many processes complete.

It is our belief continuity is important factor on our board at this time, certainly more so during our transition towards a full governance structure. It is a satisfying reward and learning opportunity for our board members after the past couple of years spending most of our focus on the success for our BID creation and relief from the extra time volunteered over and above the usual expectation of a Board.

With that being said, we have one new board member; Hazelle Ventura (Manager Farmers WestCity) Hazelle brings to us a retailer's aspect and of course her own experiences working for a large well-known NZ retailer. With Hazelle coming aboard and we say goodbye to Lesa Davis (Owner Nitrogenx) Lesa's input over the past couple of years has been recognised and we will miss her.

As I did at the AGM, It's timely for me as the chair to publicly thank the CPHBA Board through this media. I would also like to on behalf of the Board, thank Garry Bates, as we all know Garry's drive for the betterment of the association is immeasurable. Well done Garry.

Now putting the AGM & BID reporting formalities behind us and we can get back to concentrating on our core objective "Business Improvement". There are many challenges and opportunities before us. The CPHBA Strategic plan was presented at the AGM it makes a good read, outlining the key objectives of our/your association, we have our work cut out for us! Nevertheless, are looking forward to announcing our deliverables over the coming months/year.

The ever changing business environment COVID has created for us all has certainly added a new perspective to planning, the term "what if" has risen up on the agenda of many of our business plans, from usually sitting down the bottom of the list somewhere. None of us want another level change, already the impact on consumer confidence, supply constraints etc, is a challenge and won't be going anywhere in the near future. The impact will be felt by many of us for a long time. Interestingly from many conversations I have had, the forced in-depth review of operations, expenses and cashflow has had some positive management implications for many.

If you are considering some help planning or general



KELVIN ARMSTRONG

business assistance consider giving Garry Bates a call, part of our association strategy is our Business Advisory Partnership, we understand the difficulty of finding a quality fit professional is not an easy one, as business owners and past owners we can give qualified referrals of such, making the selection a little easier if required.

Experiencing the COVID impact has had on many of our businesses, was an extraordinary and profound view of sustainability. The sudden shock of entering this event was pretty scary, my primary consideration back in March was whether my "war chest" was going to be enough! It was a surprise to me that some of my associates had not heard of that term - this lets me sleep at night! As productivity takes a dive through the Christmas break as it would have through the COVID levels, winging it is no longer a sustainable path. Consider your war chest and its accessibility, as we continue the path of recovery and show the world how its done!

.....
KELVIN ARMSTRONG, CHAIRPERSON CPHBA

kelvin@kaar.co.nz - 021 828 008



Beterly Pan BCom 国粤英

COMMERCIAL & INDUSTRIAL

Bayleys Real Estate Ltd Northwest
Licensed under the REAA 2008

beterly.pan@bayleys.co.nz
Mob : 021 139 2228
Office : 09 953 4740





ADVERTISERS

OUR WONDERFUL WEST AUCKLAND BUSINESS SUPPORTERS – PLEASE SUPPORT THEM

Honouring Lives for Generations

We've delivered personalised goodbyes for over 80 years. Thank you West Auckland, for your trust in us.



Davis
Funerals

150 Central Park Drive, Henderson | 09 835 3557 | office@davisfunerals.co.nz

DRAKE
NEW ZEALAND

LOOKING FOR TALENT IN 2021?

CALL 0800 840 940

Drake Henderson has been helping to connect businesses with the best talent since 1971. Whether you are searching for a new role, or great staff, contact Drake today!



PERMANENT
RECRUITMENT



FLEXIBLE
STAFFING



UNBUNDLED
RECRUITMENT



P3 BEHAVIOURAL
ASSESSMENTS

6/8 Pioneer Street, Henderson

nz.drakeintl.com

[in /company/drakenz/](https://www.linkedin.com/company/drakenz/)

[f /drakewestauckland/](https://www.facebook.com/drakewestauckland/)

HighWire
ELECTRICAL

INTEGRITY | HONESTY | VALUE

P. 0508 44 44 94

E. [INFO@HIGHWIRE.NET.NZ](mailto:info@highwire.net.nz)

W. HIGHWIRE.NET.NZ

COMMERCIAL
DESIGN
HOUSE REWIRING
NEW BUILD
LIGHTING
HVAC
HOT WATER
ALARMS
AV/TV
DATA
AVAILABLE 24/7



THE HENDERSON CHRISTMAS FESTIVAL

Returns To The Town Centre

The Central Park Henderson Business Association (CPHBA) in partnership with the Henderson-Massey Local Board (HMLB), Auckland Council, Police, and local community stakeholders, are delighted to announce, they're bringing back the Henderson Christmas Festival, back into the heart of the Henderson Town Centre (HTC)!

Planning for this event is well underway, acknowledging the local board for their support and approval in relocating this wonderful festive celebration from Henderson Park where it has been held in the last few years and putting it back into the heart of the Henderson Town Centre.

This Christmas festive celebration is part of the overall HTC Community-led Plan which has been in motion since last year but recently launched in the last edition of this magazine. The HTC Community-led Plan along with a number of community and safety focused activities are delivered and monitored by a collective of local agencies, the business association, local board and local community stakeholders.

It is expected the event will bring back families that once attended this annual event with their children and grandchildren since 2016. Given the hardship and the challenges everyone has had to face this year impacted by COVID, the event planning team has gone hard and fast preparing for many fun activities and entertainments to ensure this festive celebration has a positive grand standing impact back into the heart of Henderson this year.



The local board and the business association encourages all our West Auckland families to come out and fully support, enjoy the day the working group has tirelessly worked on in preparation for our community. Thank you to our local police and other agencies that have thrown support behind this celebration to ensure a successful experience is had by our community.

Expect colours, vibrancy, music, performances, entertainments, food, celebrities coupled with the many cheerful things that the festive season celebration expected on the day. It is also rumoured that Santa is making a special detour from his travels to visit this celebration, look out kids!

The Henderson Christmas Festival is set for Saturday December 12, 2020 from 12pm to 4pm, with all the celebrations taking place on Great North Road, expected road closures of Great North Road between Trading Place and Railside Avenue from 9am to 5pm.

Please come and enjoy the day, visit the many stalls on offer, the entertainments, food and you might even get a photo with Santa!

Please consider the many volunteers involved in putting this celebration together and working on the day, do say hello and acknowledge their voluntary kindness on the day!

Merry Christmas to you all

From the HTC Community-led Plan team.



FREE

Henderson Christmas Festival

Saturday 12 December, 12pm–4pm
Henderson Town Centre

Celebrate the festive season with an afternoon of entertainment for the whole family including games, carol singing and so much more.
A smokefree, zero-waste, alcohol-free event.



Ourackland.nz/christmas
hendersonmassey

**Henderson-Massey
Local Board**
Auckland Council





Gear up for BBQ season with Mitre 10 MEGA

\$399



Weber

Baby Q 1000 BBQ

Titanium (also in black)

239457

\$569



Weber

Q2000 BBQ

Titanium (also in black)

318399

\$949



Weber

Q 3100 LP BBQ

Titanium (also in black)

239459



\$19⁹⁵

Designed to cut through grease

Weber

Q Cleaner 500ml

219693

Starting from \$34⁹⁵



Weber

Premium BBQ Covers

Assorted SKUs

Starting from \$69⁹⁵



Weber

Half Hot Plates

Assorted SKUs

Mitre 10 MEGA Westgate & Henderson

Northside Drive & Lincoln Road

Monday to Friday: 7am - 7pm

Weekends: 7am - 7pm



MEGAWestgate

MEGAHenderson

**MITRE 10
MEGA**

**WESTGATE &
HENDERSON**



FIND THE PERFECT BBQ

BBQing is a tradition going back 100's of years, while our tools might be a little more advanced now, there's nothing like a meal hot off the grill. Whether you're turning hand-selected ingredients into a gourmet feast or cooking a few sausages, hamburgers, or steaks for the family; Mitre 10 MEGA has you covered.

Their range of BBQs & accessories have something to meet the needs, lifestyle & budget of every outdoor chef. You must check out their 'Weber Wonderland' of BBQs, also see the great recipe on page 18 in this issue.



ENHANCEMENTS PROGRESSING

at Mitre 10 MEGA Westgate

The extension work is well and truly underway for Mitre 10 MEGA Westgate, with the demolition of the old Palmers building nearing completion. Soon to become to the largest retail-type MEGA in the country.

The store will increase from just over 11,000 square metres including trade and garden areas, to over 15,000 square metres. The retail area will see an increase in size of over 3,000 square meters.

Owner operators Dave and Elaine Hargreaves are thrilled with the progress thus far and are excited for what the next couple of years has to offer for the store. "Although COVID-19 has slowed the extension plans down a bit, we're just grateful to see progress and are looking forward to the completion which should hopefully be around the time that Costco is set to open" said Dave.

Work on Costco began in October and the retail and grocery giant is hoping to open its first New Zealand store in Q2 of 2022. The Hargreaves are hopeful that the extension will work alongside the extra foot traffic this will generate, and by building closer to the Costco, they expect to see a natural increase in customer numbers.

Although 2020 has thrown its fair share of curveballs, Dave and Elaine also wanted to express their gratitude for the support the West Auckland community had shown their Henderson and Westgate stores. "Without it, we wouldn't have been able to keep over 200 people in jobs, but we're extremely proud of the fact that everyone who was employed by the stores at the start of the year is still employed now" said Elaine.

The team at both stores wish to extend a safe and happy festive season to the entire West Auckland community.

APPRENTICESHIPS - THE LOWDOWN

Within the article in our last issue (page 13) the 'Apprenticeship Boost' initiative was touched on, some common questions were asked by members about the topic. To this end; an 'FAQ' list has been established in collaboration with our MSD partnership and their counterparts.

- What is Apprenticeship Boost (AB)?

AB is a payment available through the Ministry of Social Development (MSD) to support employers of apprentices in their first or second year of training. Employers can receive up to 20 months of support with payments of \$1,000 per month in apprentices' first year, and \$500 per month in their second year.

- When will Apprenticeship Boost start?

AB will run for about 20 months starting in August 2020 to April 2022. Applications will open on 5 August through MSD's Work and Income website.

- What is the goal of Apprenticeship Boost?

The goal of the AB is to help employers retain and bring on new apprentices as New Zealand recovers from the impacts of COVID-19. Specifically, it will help employers to keep first and second year apprentices employed and training towards their qualification. The AB will provide support to employers to meet the costs of retaining apprentices, or hiring new ones, in their first 24 months of their programme of study.

- What is MSD's role in this initiative?

The Ministry of Social Development (MSD) is responsible for the Apprenticeship Boost, and its key role is to receive employers' applications, process

them and make the payments.

- What is TEC's (Tertiary Education Commission) role in it?

The TEC will support MSD by verifying an employer's eligibility and confirming the number of months of training the apprentice has completed.

- What apprentices are eligible?

To be eligible the apprentice must be actively training towards a NZ Apprenticeship (through a transitional ITO) or a TEC approved Managed Apprenticeship through a provider. The apprentice also must not have completed more than 24 months study towards any apprenticeship.

- Why aren't other employers with different types of apprentices allowed to get the payments?

Support will be available to employers of first and second-year apprentices in all NZ Apprenticeships and TEC recognised Managed Apprenticeships. The payment targets these apprentices as they are earlier in their training pathway and therefore more likely to be vulnerable to redundancy during economic downturns.

- Where should I direct further questions from employers about the AB?

MSD are leading the Apprenticeship Boost programme and are best contact point for employers.



Plumbing

WATERTOWASTE PLUMBING&DRAINAGE

WWW.WATERTOWASTE.CO.NZ 0800 99 00 69
UNIT C/5 COLLARD PLACE

WE ARE YOUR FULL SERVICE PLUMBING&DRAINAGE COMPANY
INCLUDING : DRAIN UNBLOCKING - GAS FITTING - BACK FLOW TESTING - GUTTER CLEANING



- Do I need to change the privacy statement on our training agreements as information is now being shared with MSD?

No. Employers will need to get their apprentices to sign a consent form as part of the application process. This will cover the changes in privacy arrangements and enable TEC and MSD to share information.

- If an apprentice's training is on hold, is their employer still entitled to the AB subsidy?

TEC will advise MSD when an apprentice's enrolment is on hold. Payments will not be made when we have reported an apprentice as on hold.

- Does an apprentice's previous study or training impact their eligibility?

- Yes possibly.
- If an apprentice has been enrolled in other apprenticeship programme previously this will count against their months of eligibility.
- If the apprentice has enrolled in other vocational training that is not an apprenticeship this will not impact their eligibility.



- How does previous study or training count against eligibility?

Every month will count where there is a record of an active apprenticeship enrolment on the last day of a month. "Active" means the enrolment is not on hold, or has been withdrawn or completed.



- If I get more demand for delivering Managed Apprenticeships, can I deliver more EFTs than I previously indicated?

No, Apprenticeship Boost is about supporting your current apprentices, and not growing these. The reason for this is that as the transition to RoVE* occurs we

(a) do not want to complicate/confuse things for employers or apprentices, and

(b) RoVE is about creating a collaborative vocational education system rather than one that is competitive. Our continued message is that it is business as usual, which means employers signing up apprentices with relevant transitional ITOs.

*RoVE 'Reform of Vocational Education'

More information on Apprenticeships to follow in our next issue.

Bu-Mac
ENGINEERING

- Precision Engineering
- Breakdowns and Repairs
- CNC Machining
- Fabrication

Bu-mac provides business with end-to-end solutions that includes Project design, Manufacture, Quality checks and Installation.

If you need a product manufactured or fabricated, please ask us for a quote.

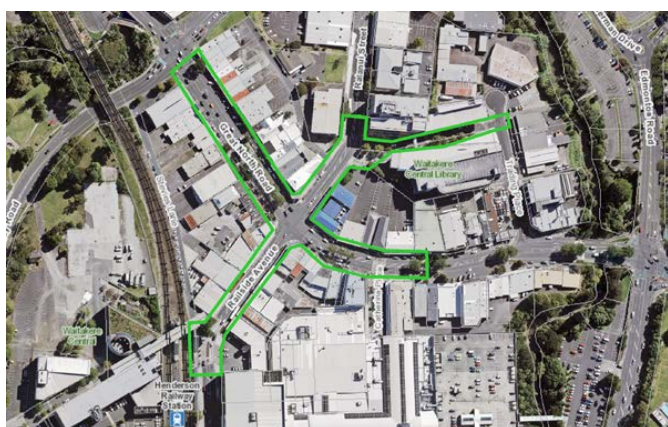
6 Corban Ave, Henderson Email: james@bumac.co.nz Ph: (09) 836 4417 W: bumac.co.nz

BRINGING LIFE, COLOUR & CHANGE TO THE STREETS of the Henderson Town Centre

Intersection Artwork Example - Source Social Media

A new pilot project 'Henderson Streets for People' is coming to the Henderson Town Centre. This project has been awarded funding through the Waka Kotahi NZ Transport Agency's Innovating Streets Programme and will be delivered by a group of Henderson locals in partnership with Panuku Development Auckland (Panuku) and Auckland Transport.

Panuku is committed through its urban regeneration Henderson programme to deliver a flourishing urban eco-centre. One of Panuku's key priorities areas is to improve walking and cycling connections through the town centre for residents, commuters, and visitors. The Henderson Streets for People project focuses on improving walking and cycling routes between the Henderson Train Station, through the town centre to the twin streams, along Ratanui Street and Great North Road.



The project aims to work with local people to bring colour and vibrancy to the streets, make it safer for all modes of transport moving through the town centre, strengthen transports links, creating more welcoming and people-friendly spaces and support the business community.

Panuku are also collaborating with Auckland Council's Community Empowerment Unit to design with communities and local businesses, on how to create and test different layout solutions and placemaking



Roadway art example -Sourced on Social Media

activities to improve the area. This could include painted designs on the road, installations of colourful planter boxes, road layout changes and pop-up activity. The changes are temporary in nature, so if successful they will be made permanent, and if not, they can be removed.

In November, Panuku gathered a group of representatives together from Te Kawerau a Maki, Henderson-Massey Local Board, community leaders, businesses, residents, and agencies. The focus was to generate ideas about how we might encourage a diversity of local views to participate in the co-design sessions planned for December. From this session we were able to collate a starting list of groups to be invited to participate, how we could approach to encourage participation through differing formats, locations, and times of the day.

What next?

Co-design sessions with the community are planned for December 2020 and testing the ideas on the streets is from February 2021.

To stay informed and find out how you can participate, email: lisa.gooding@panuku.co.nz



Palmerston North Artwork - Sourced from PNCC



HENDERSON TOWN CENTRE (HTC)

COMMUNITY-LED PLAN - UPDATE

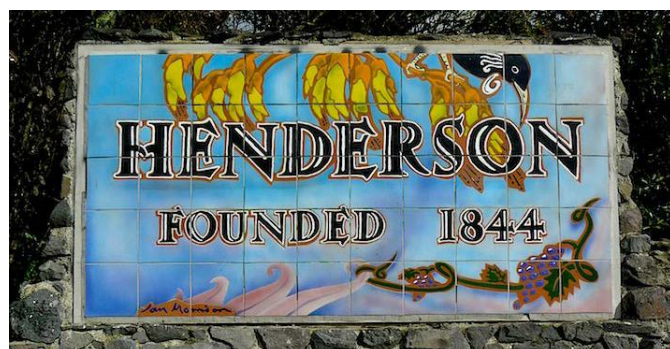
The Police, Henderson-Massey Local Board in partnership with the Central Park Henderson Business Association, agencies and local stakeholders are happy to report that some positive progress of activities from its HTC Community-led Plan are tracking well to enhance safety and well-being across the Henderson Town Centre.

Our CCTV sub-group team have been working closely together taking a coordinated technical approach to ensure a collective approach is taken on the use of CCTV cameras as a resource for the police to use to improve safety across the Henderson Town Centre.



Our homeless, rough sleeping and vagrancy issues across the town centre are being carefully managed and monitored by another sub-support team. The group is exploring options focusing on sustainable ways and not restricted to just enforcement and compliance, but explore opportunities, wrap-around support, and programmes to support our vulnerable community.

The police continued to serve and focused on the Henderson Town Centre in their efficient and professional capacity. Police is working closely with a number of local youth service providers exploring holistic ways to support our young people. They've also joined forces with our community volunteers of; pacific wardens, community patrollers and neighbourhood support teams to develop a coordinated deployment plan to increase visibility of yellow and blue uniforms



across the town centre. Please say hello when you come across our volunteers on the streets!

Activating the town centre requires time, planning and ideas. Our Activation team has been in full speed ahead scoping, consulting and gathering ideas. The team recently carried out a short sharp workshop session with local businesses and through this raw data collected it has contributed towards the development of an activation plan. The team is also running and supporting the council production team in the delivery of the Henderson Christmas Festival planned for Saturday December 12th set in the heart of the Henderson Town Centre.

Bring the kids, the whanau and come down experience the full swing of celebrations of the festive season down there. The event will be filled with fun activities, food stalls, live stage entertainments, performances and many more. It is also rumoured that Santa is making a special detour from his travels to pop in to see the westies kids and families on the day.

Fantastic news from Panuku in partnership with the local board, Auckland Transport, and the HTC Community-led Plan, they've secured funding from central government to explore an innovating streets project across the heart of the Henderson Town Centre, watch this space!

We acknowledge this year has been difficult for everyone and we just want to re-assure our communities that we are all in this together. We're all working tirelessly behind the scenes to ensure our town centre is safe, clean, and vibrant for our families to visit, shop, play and enjoy.

On behalf of the HTC Community-led Plan family, we wish all the readers the very best of Christmas and please stay safe over the New Year!

bnz
“Your business partner in the West”
Greg Norman
Partner - Business - Acquisition
North West Auckland | **BNZ Partners**

BNZ Partnership Banking, 373 Great North Road, Henderson, Auckland
DDI. +64 9 835 1704 | M. +64 21 809 163 | E. gregory_norman@bnz.co.nz



WHY ARE WE SEEING STRONG SALES RESULTS NOW? with Ray White Universal

Real estate markets are driven by a number of factors; however, the two basic fundamentals of supply (the number of total properties for sale) and demand (the number of buyers active in the marketplace) play a significant role in establishing market conditions that favour sellers or buyers.

In general terms, when supply is low and demand is high, conditions are favourable for sellers. Conversely, when supply is high and demand is low, conditions are favourable for buyers.

So, what are we seeing now?

SUPPLY

As we enter the end of 2020, we would expect to see a continued increase in the number of new listings coming to the market prior to Christmas.

If you look at the numbers that are occurring each week, while the supply-side still remains strong in comparison to this time last year, being up 15.92 per cent, this is not enough to service the demand level that is evident on a continuing basis, with the sales volume lifting by 27.56 per cent on the same time last year.

DEMAND

Continues to outweigh supply. When looking at the number of potential buyers in the market there are

several considerations we take into account. The number of buyers looking online for property, the number of buyers who enquire on properties for sale, the bidding activity we see each week across our auctions and also the number of people actively gaining pre-approval for finance to purchase a property.

So what factors are continuing to create confidence in the market? The long-term forecast of low-interest rates and affordability around the purchasing of property. The number of first home buyers coming into the market is increasing significantly as they take their opportunity to purchase at interest rates that are the lowest on record, starting from 1.99 per cent. Consumers with additional cash due to the lack of international travel and some uplift from returning expats is also giving momentum to the market.

A high level of rental activity continues to also attract investors into the market. It is suggested that current rental yields are likely to continue to attract investors despite rising housing prices due to the long-term low interest rates.

Our team of specialists are busy and our Auction results have been outstanding. Being able to adapt easily to the ever-changing market, is our strength and we pride ourselves on being able to provide a leading edge building, encompassing a team of specialists in their field to provide the best property solutions to our clients and customers.

So whether you are looking to SELL, BUY or INVEST, your first port of call is to chat to the Ray White Universal team. We are your one-stop-shop and always happy to assist you!

Call us today! (09) 869 9000

RWuniversal.co.nz





The Complete Real Estate Experience



Ray White Universal

We offer a complete real estate experience.

We are completely focused on bringing the best of the best together so we can provide a slick professional service and an overall real estate experience second to none. By incorporating the 5 key components of your Real Estate needs, we can help you understand all your options before making a decision.

Unsure what to do with your property? Sell or hold? Talk to our Loan Market experts to gauge your options; perhaps you need to upsize or downsize? Our Residential team are there to help. Or if you're not quite ready to buy, you can discuss rental options with our Property Management team. Keen to diversify your portfolio? Have a chat with one of our Commercial specialists.

Whatever your need is, we have the solution.

BUTTERFLIED LEG OF LAMB

Ingredients:

- 1 butterflied leg of Quality Mark lamb
- 1/4 cup honey
- 2 tablespoons prepared Dijon-style mustard
- 2 tablespoons chopped fresh rosemary
- 1 teaspoon freshly ground black pepper
- 1 teaspoon lemon zest
- 3 cloves garlic, minced
- 1 teaspoon coarse sea salt

Method:

In a small bowl, combine the honey, mustard, rosemary, ground black pepper, lemon zest and garlic. Mix well and apply to the lamb. Cover and marinate in the refrigerator overnight. Before cooking, remove the lamb from the marinade and grind over the salt.

Cooking on the BBQ:

Lightly oil a preheated barbecue and grill the butterflied lamb over a low steady heat, turning it several times and basting with any leftover marinade, for 30-35 minutes.

Cooking in the Oven

Preheat oven to 190°C. Place the marinated leg cut side up, on a rack over a roasting tray. Fan-bake in the oven for 15 minutes. Turn the lamb over and continue to roast for another 15-20 minutes or until cooked to your liking.

Remove from the heat and rest in a warm place, covered, for 10-15 minutes before carving. Serve with your favourite seasonal vegetables or salad.



Butterflied leg of lamb is a popular cut. It is versatile and obtains a robust meaty flavor. In the colder months it is a superb roast, and when it warms up, it is the perfect meat component at any summer barbecue.

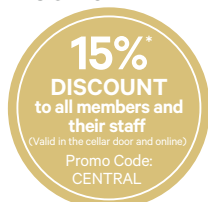
WINE MATCH - Babich Wines IRONGATE - Cabernet Merlot Franc.

They have been producing Irongate since 1986 and it has evolved into a richly flavoured, balanced, and elegant wine. The vines from this now-famous 'Gimblett Gravels' Irongate vineyard are selected at pruning, and crop levels are closely monitored to ensure excellent flavour concentration in the grapes.

Tasting Notes: Lifted aromas of red and dark fruits with a touch of vanilla and dried herbs. Spicy fruit cake with soft coating tannins and leather notes, texturally it's dense and fleshy with lingering fruit. This is serious wine of complexity and charm. This Award Winning wine is available at their Cellar Door, open 6 days a week.

Experience

THE TASTE OF BABICH WINES.
VISIT OUR CELLAR DOOR



*Discount can't be used on already discounted products or any non-wine products such as merchandise, cheese boards or non-alcoholic beverages. Can be used instore or on the online store. Offer applies to members of Central Park Henderson Business and their staff.



15 Babich Road, Henderson Valley, Auckland
<https://www.babichwines.com/shop/>

SUN BURN

Protect yourself this Summer

Sunburn is a burn to the skin caused by excess exposure to ultraviolet (UV) radiation in the sun and by other sources of UV, such as sun beds. Sunburn should be avoided if possible, as even mild sunburn can damage your skin and increase your risk of skin cancer.

UV radiation can still harm your skin on cool, cloudy days. UV radiation levels are at their peak in New Zealand from September to April, especially between 10am and 4pm. However, UV radiation levels can also be high when you are at high altitudes or around snow or ice.

How to treat mild sunburn?

Treatment for mild sunburn aims to cool the skin and relieve discomfort.

- **Avoid further sun exposure.**
- **Cool the affected area** (e.g. cold flannel over the area, sponge it with cold water or have a cool bath or shower).
- **Soothe your skin:** Aloe vera is known to have a soothing effect.
- **Rehydrate:** drink plenty of fluids to help you cool down and replace fluids lost due to sun exposure.
- **Moisturise:** if your skin is not too painful, apply moisturiser.
- **Pain relief:** take paracetamol or ibuprofen to relieve pain.
- **Don't pop blisters:** cover itchy blisters with a wound dressing to reduce the risk of infection.

As part of the healing process, sunburnt skin will peel off after a few days. There's no cream or lotion that will stop burnt skin from peeling off. This is part of the natural healing process.



How to treat severe sunburn?

You should seek medical advice if you are burnt over a large area or have any of the symptoms listed below:

- Blistering or swelling of the skin (oedema) - Chills - A high fever
- Dizziness, headaches and feeling sick (symptoms of heat exhaustion).

Your doctor may recommend using hydrocortisone cream for a few days. Severe sunburn may require special burn dressings. Very occasionally, hospital treatment may be needed.

How can I prevent sunburn?

You can reduce your risk of developing skin cancer by using this website

'sunsmart.org.nz/sun-protection-alert' and covering up with clothing, a broad-spectrum sunscreen, a hat, and sunglasses.

Remember to SLIP, SLOP, SLAP and WRAP.

Apply sunscreen

Always use a broad-spectrum, water resistant, sunscreen of at least SPF30.

Sunscreen is a lotion, spray or gel that absorbs some of the sun's UV radiation from reaching our skin.

Apply your sunscreen 20 minutes before going outside and again when you've been outside for 10 to 20 minutes. Use a 'two coat' approach; helps cover up areas you may have missed on your first application and gives you a thicker, more protective, layer of sunscreen.

Reapply your sunscreen every two hours, as well as after swimming or sweating.



A quality and affordable Medical Centre providing the best of care to improve the health and wellbeing to all our patients.

WestCity Waitakere (lower level), 7 Catherine Street, Henderson P: 09 5539 588 E: info@wimc.co.nz W: wimc.co.nz

IF NOT NOW, WHEN?

Rottneest Island

With helloworld Travel Henderson

To declare that 2020 has been a challenging year is an understatement! The International Travel hopes and dreams we all had at the start of the year were blown away by the global pandemic.

We acknowledge that being “stuck” in New Zealand is not a hardship, because we are so lucky to live in such a beautiful country. Many of you have taken this opportunity to travel around parts of New Zealand that you may not have otherwise visited, and we thank you for supporting us with your local bookings.

My personal motto in 2020 has been to “FOCUS ON THINGS I CAN CONTROL”. This has helped me navigate a year that has drastically impacted the Travel business that my husband Jason and I have spent 5 years nurturing and growing, to suddenly reverse these efforts. Keeping my motto front of mind has helped me re-focus on a few of life’s essentials: my health, my family, and my friendships!

WHERE IN 2021?

So, like you, we are looking forward to 2021 with awareness that it will take time to heal the world and allow us the opportunity to venture beyond our shores again to fulfil our passion for travel.

We should enter 2021 with more confidence to start planning an adventure (or two). Initially closer to

home with the indication of a South Pacific bubble followed by the opportunity to travel freely to and from Australia. We hope that a few individual destinations that have managed Covid well can also open to New Zealanders for a well-deserved holiday adventure, such as: Vietnam, Singapore, Japan, or possibly Taiwan.

We can help you plan a 2021 escape to a pacific island. Many resorts are offering flexible bookings, so contact our travel experts with your chosen dates and we will hold the accommodation while waiting



Bruny Island Australia

friendlypak
compostable product innovation

Buy
Local

Make Christmas more sustainable with Compostable Packaging

- guaranteed not to last
- convenience without guilt for your catering or packing



Food Ware



Box Pak



Drink Ware



Bag Pak

www.friendlypak.co.nz | www.vegware.co.nz | sales@friendlypak.co.nz | Free phone 0800 rethink (738 446) | +64 (0)9 950 420
651b Rosebank Road, Avondale, Auckland 1026. Business and showroom hours Mon to Fri 9:00am to 2:30pm



on border updates (we can add flights later). Once official bubbles are announced we expect key dates (especially school holidays) to sell fast.

We have an exciting selection of Australia adventures available for 2021. Discover Tasmania, Western Australia, the Red Centre, or The Kimberleys, to name a few. We are holding group space on a number of unique travel tours or can create your own independent experience. Again, our suppliers are being very supportive to us and our customers with flexible booking policies that we can explain upon enquiry.



KUNUNURRA Kimberley Australia



El Questro Kookaburra

WHERE IN 2022?

An important reminder if you are dreaming of travel further afield in 2022 that due to GLOBAL pent-up demand: Tours, cruises and popular tourist experiences are FILLING FAST already!

Please PLAN AHEAD and take advantage of the flexible booking policies and your credits to hold your cabin, or space on your chosen tour, so that you don't miss out.

In the meantime, we can continue to book your New Zealand holidays and support local tourism operators.

Our travel professionals enjoy helping you plan your dream holidays so allow them apply their expert knowledge to save you time and ensure you book the most suitable travel options.



There is light at the end of the tunnel for the Travel Industry with work being done to safely opening the borders between New Zealand and the South Pacific and Australia.

Your local Travel Professionals at Helloworld Travel Henderson have expert knowledge of all Australia and South Pacific travel products.

We look forward to helping you plan your post-COVID getaway.

helloworld Travel Henderson



henderson@helloworld.co.nz



09 839 0371

helloworld
TRAVEL
THE TRAVEL PROFESSIONALS

THANK YOU BREAKFAST FOR STAKEHOLDERS

with Waitakere College

Waitakere College Vocational Pathways Department hosted a thank you catered breakfast on Wednesday 4 November. It was a huge success with over 200 people in attendance.

Work Experience Employers, Industry Training Providers (including UNITEC, BCITO, Crown), teachers, students and parents were invited to attend a catered breakfast at the Jackson Auditorium (School Hall) to celebrate 2020 students and their great work experience placements.



Dan and Martin from The Kitchen Centre

Local West Auckland Central Park Henderson Business Association members in attendance were Matthew from Vivid Computers, Andrew and

Martin from Mitre 10 Mega Lincoln Road, Martin and Dan from The Kitchen Centre, Te Awanui from Quality Hotels Lincoln Green and Waitakere Netball.

During the morning, guest speakers including past students spoke about their school experiences with their work experience placements while at school, and the successes they have gained in their careers in Hospitality and Engineering fields. 2019 Prime Minister Award for Vocational Excellence recipient Jadzia Pyne spoke about her practical Engineering experience whilst on placement at Auckland University Facility of Technology and how this opened the door for her to complete her first year of an Engineering apprenticeship at the University in 2020.

Te Awanui Te Tai from Quality Hotels, Lincoln Green, Sales and Marketing Manager, completed the Service Academy and Gateway programs during her time at Waitakere College. She spoke about how she liked the 'structure, discipline and personal presentation skills' she learnt during her time in the Service Academy under the leadership of the Service Academy Director Staff Jeff Berriman (whose ex-army background helped straighten her out). The Cultural support provided

by the school and Whaea Pearl during her years was instrumental in her finding her way and achieving success, despite being a self-confessed 'Rascal child' at High School.

Te Awanui also took part in the 'Gateway' work experience programme run by the Vocational Pathways Department at school, doing a placement at Swanson Primary School exploring teaching as a career, before finding her niche in Hospitality during a placement at the Lonestar Restaurant and later getting head-hunted to join Lincoln Green. Her six year career started out waitressing and she is now working in Management, Specializing in Sales and Marketing the business and the various events hosted on site.

During her final year at Waitakere College in 2012, Te Awanui achieved the Highest Achievement Maori Student and Top Cadet in Service Academy, two feats she is immensely proud of.

At the end of the breakfast a panel of students from the Gateway programme, Engineering, Building, Hospitality, Health Academy's spoke about their work experience and what benefits the programme gave them and their career choices.



Andrew from Mitre 10 Mega



Te Awanui Te Tai - Sales & Marketing Mgr QHLG



Matthew from Vivid



INVESTING IN CRYPTOCURRENCY... OR PROVIDING CRYPTOASSETS TO EMPLOYEES?

Inland Revenue recently released guidance on the tax treatment of investing in or owning cryptoassets. While there are different types of cryptoassets, for tax purposes, they are treated as a form of property and the tax treatment of such property depends on the characteristics and use of the cryptoassets, not what they are called.

Inland Revenue (IRD) recently stepped up their audit activity in this area, in particular by requesting that cryptoasset exchanges provide information on users who invest in cryptoassets anonymously, to assess whether transactions involve gains that give rise to taxable income.

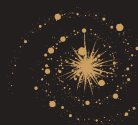
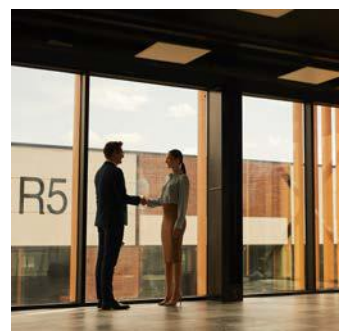
So, what is a Cryptoasset? A recent OECD publication stated that there is no internationally agreed definition, but the term is commonly used to refer to types of digital financial assets based on "distributed ledger technology" (DLT) or Blockchain. IRD uses the term Cryptoasset.

To determine if IRD will view a cryptoasset transaction as taxable income, they will look at: the tax residency status of the individual, and whether the income source of cryptoasset transaction is outside New Zealand, amongst other things. Often the latter is not easy to answer when the transaction arises on a DLT. IRD also considers the disposal of cryptoassets to be taxable under a number of different tax rules, but essentially, taxes on profits will arise if cryptoassets are acquired for the purpose of disposal, or forms part of a profit-making scheme or you trade in cryptoassets.

If you accept cryptoassets as a form of payment for a business transaction, you will be treated as receiving income and the subsequent disposal of the cryptoassets. Where you provide cryptoassets to your employees, you will need to account for PAYE or FBT on these payments. IRD has issued public rulings where cryptoasset payments are in the form of salary, wages, or bonus payments (and thus subject to the PAYE rules) and fringe benefits arising from employer issued cryptoassets, or where an employer issues cryptoassets as a "share", but the employee isn't required to pay market value.

Where an individual or business, owns cryptoassets, the cryptoasset activity should be included in your tax return when it creates taxable income. You should maintain good records for all cryptotransactions and hold for at least seven years and include data on: the type of cryptoasset, the date and type of the transaction, value in NZD, number of units, total units held at the beginning and end of year, retain all bank statements and exchange records and wallet addresses.

This is a complex area of accounting and law, requiring professional advice especially when IRD come calling. Given IRD has now issued some clarity and guidance in this area, pleas of ignorance are likely to not be accepted.



**GINAJANSEN
LAWYERS**

**HELPING WEST AUCKLAND
BUSINESSES GROW**

**WE PROVIDE BUSINESS ADVICE.
CONTRACTS. COMMERCIAL. PROPERTY.
LEASES. IRD DISPUTES & TAX DEBT.**

**WE ARE INNOVATIVE. PRACTICAL.
COST EFFECTIVE. EXPERIENCED.
LET US HELP YOU. CALL NOW.**



DECEMBER CHECKLIST

with Kings Plant Barn.

December is a great month in the garden. The cold is well behind us and there's still time to get the garden tidied up before Christmas.

PLANT NOW

Summer Veggies

Plant large-grade tomatoes, capsicums, chillies, and eggplants in pots and in the garden now for an instant, delicious and productive harvest.

Planting: Stagger your planting so that you can harvest over a longer period: tomatoes, courgettes, chillies, beans, peppers, and basil can go into the garden. Lettuce, coriander, and parsley should be planted in part shade, and watered regularly, to help prevent bolting (going to seed).

Fruit

Citrus: Plant citrus trees right through summer, making sure to you keep them well watered. Add instant zest to your summer by planting a large-grade Meyer lemon that is already flowering.

Passionfruit: are a must for every Auckland garden! Choose a warm sunny fence to plant up against. As it grows, prune it occasionally to increase airflow and reduce the chance of disease.

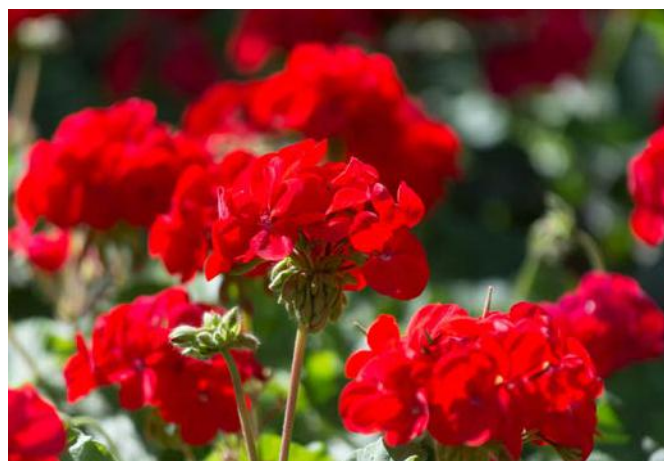
Subtropical fruit: such as natal plums, paw paws, guavas, and tamarillos to plant. For best results add

compost and sheep pellets when planting and keep well-watered.

Trees & Shrubs

Roses: are now in bloom and looking stunning. Keep them well watered, especially while they are getting established after planting. Watering deeply less often is more effective than a light watering daily. Feed while they are in bloom.

Tropical Plants: Looking at creating a summer-themed garden? Create a tropical oasis in your backyard by growing hibiscus, tropical frangipani, gardenia and mandevilla.



Lavender, Snapdragons, Marigolds



Speak to your local

Garden Experts

Visit your local **Kings Plant Barn** for a huge range of top quality plants, plus expert advice to help bring your garden ideas to life!

KINGS PLANT BARN | 224 UNIVERSAL DRIVE, HENDERSON
OPEN 7 DAYS | 0800 PLANTS | kings.co.nz



Flowers & Perennials

Instant Colour: There is a large range of plants to choose from, including asters, alyssum, petunias, dianthus, dahlias, salvia, zinnias, snapdragons, and verbenas to plant in pots, hanging baskets or in your garden now.

Perennials: Plant out long-lasting flowering perennials, including nemesia, petunias, geraniums, alstroemeria, calibrachoa, lavender, verbenas and bacopa. Great in mass plantings or as part of a cottage garden.

Shady Spots: Brighten up shady spots by planting tropical impatiens, fuchsia, hostas and heucheras.

TEND

Vegetables: Water, feed, mulch and stay on top of the weeds before they take over. Feed your plants regularly with Kings Fast Food to keep them happy and healthy.



When watering tomatoes, courgettes and cucumbers avoid wetting the foliage to reduce the chance of disease.

Fruit Trees: Protect developing fruit from birds by carefully netting your trees or plants. Deeply water newly planted trees regularly every 1–2 weeks and mulch well with Living Earth More Than Mulch.

Lawn: Continue to keep your lawn looking lush by feeding and getting rid of weeds the easy way with spray on Yates Weed N' Feed.

HARVEST

Vegetables: December is berry time! Harvest succulent strawberries, tangy red and black currants, raspberries, blueberries and early blackberries. It's also harvest time for Māori potatoes, tea leaves, eggplants, and early tomatoes.



For Quality Print & Service

Brochures ■ Books ■ Business Cards
Packaging ■ Posters ■ Flyers ■ Folders ■ Corflutes
Labels and anything printed on paper or card.



ph: 09 377 4882

sales@pressprint.co.nz

www.pressprint.co.nz

HAS NZ SLIPPED ON EVS?

Courtesy EVs & BEYOND

New Zealand was once up there in its EV uptake and technology. Sadly, we seemed to have slipped during the past few years and simply watched as Europe and others planned bans on fossil fuel vehicles in cities and encouraged the drive to low or zero emission transport.

The market has responded with many vehicle brands now fast-forwarding the switch to EV manufacturing. Have the wheels fallen off here? We now risk getting the leftovers as car makers like Tesla, BMW, Mercedes-Benz, Volvo, and others rush to plug the EV gaps in Europe and elsewhere.

What's worse is New Zealand could quickly become a dumping ground for cheap fossil fuel vehicles from countries and regions that no longer want them. Galling to me is the fact that Australia is likely to rapidly overtake us on EVs and other 'green' transport in the e-mobility field after being branded the laggard for years – and that's in spite of a federal government largely unwilling to shed fossil fuels for cleaner, greener renewable energy powered alternatives.

Australia's states and territories

have taken the move to low emission transport and renewable power into their own hands – witness the massive uptake in rooftop solar, for instance.

People power is calling the shots. And Joe Biden's win in the US presidential election race seems likely to favour the drive to EVs and renewable energy, especially with his call for the US to return to the Paris Agreement to mitigate climate change.

The tragedy that is the continuing COVID-19 pandemic saga has one silver lining – lockdowns forced most traffic from city streets and woke people up to how much pollution ICE vehicles bring. Now the move is on in earnest to 'save the planet' and decarbonise transport – cycling and electric bikes in particular finding such favour globally they're difficult to get to meet the demand.

...Article continued on page 30.



VW E-Golf Tristram Volkswagen



Commercial
Vehicles

Introducing five-billion-star accommodation

The all-new Grand California

Featuring all your home away from comforts including a spacious living area, separate wet room and touch pad control panel to keep everything in check. Plus, 4MOTION 4WD and a 5-year warranty, your next adventure awaits.



Tristram European West Auckland | 33 Soljan Drive, Henderson | Ph: 09 553 9370 | www.tristramvolkswagen.co.nz

5 YEAR
WARRANTY



KEEPING OUR VEHICLES RUNNING IN TOP SHAPE

with New Zealand Performance Tuning

The team at NZ Performance Tuning, based out of 5d Paramount Drive just off Central Park Drive have been making cars go faster and sound better for the last 12 years, 6 of which we have been right here in Central Park.

Dave, Pieter, and Nicole have a wealth of knowledge on all things performance and specialise in the UTE/4WD market as well as the EUROPEAN market.

NZ Performance Tuning focuses on the remapping (or tuning) of on-board computers to increase performance and make driving more fun as well as performance parts such as exhaust systems, intake systems, intercoolers and more.

As well as this they are happy to do service work for their existing clients to keep their vehicles running in top shape. We understand the importance of good maintenance of vehicles so only use genuine parts that are fit for purpose for your vehicle.

Having invested heavily in the very latest tuning tools, they can work on and tune more vehicles

than anyone else in the country. In fact, Dave was instrumental in the development of tuning for the Toyotas working alongside tooling developers in Europe to successfully tune the very first Hilux and Land Cruisers in the world, right here in Central Park, Henderson.

Dave and Nicole also own a major international tuning group, being the AgriTune Group with more than 50 international dealers tuning everything from trucks, to tractors, mining equipment, loaders, boats and more. Paramount Drive also serves as head office for this enterprise as well.

NZ Performance Tuning welcomes anyone to drop by for a chat,
or visit their Facebook page -
@nzperformancetuning · Automotive Store
Website: nzperformancetuning.co.nz - for more information on what services they are able to provide for your vehicles.

A blue Toyota Hilux UTE parked on a wet surface at night, with city lights in the background.

EXPERTS IN
UTE 4WD & SUV CUSTOM
ECU REMAPPING

BENEFITS INCLUDE:

- INCREASED POWER OUTPUT
- ENHANCED TORQUE DELIVERY
- IMPROVED THROTTLE RESPONSE

PLUS:

- FULL WARRANTY COVER WITH 30 DAY SATISFACTION GUARANTEE

IMPROVE THE PERFORMANCE OF YOUR VEHICLE TODAY.

5d Paramount Drive, Henderson, Auckland. Phone: 09 837 6252
nzperformancetuning.co.nz

NZ PERFORMANCE TUNING



DAVIS CLASSIC CAR SHOW RETURNS IN FEBRUARY

The Davis Classic will be back for a third year. Davis Funerals, under its programme of delivering community events and entertainment across the greater Auckland area, is proud to be bringing the Davis Classic back to the West.

With a focus on public and exhibitor fund raising to support the immensely valuable services that Hospice West Auckland provide to the community in the west, the day is all about getting families out and about, and letting them enjoy a car show featuring bikes, cars, and trucks of interest.

That's right, everything from Minis to Mercs; American, European, Aussie, and US muscle, it will all be there. In addition to the cars there will be kid's face painting, food trucks to keep those hunger pangs at bay and a small market featuring a number of stall holders.



CAR SHOW

21 February 2021

10:30am – 1:30pm

FREE ENTRY AND PARKING

150 Central Park Drive, Henderson

Proudly brought to you by





This year's event will be held on Sunday 21 February from 10 am to 1.30 pm. The event will be back at Collard Place, utilising the carparking at Davis Funerals, as well as space generously made available to us from our neighbours Plumbing World and Blue Star. Public parking is available at 183 Central Park Drive to making the show more accessible.

Further information regarding the event can be obtained by contacting the manager of Davis Henderson, Mike Powell on 0220 598 014 or mike@davisfunerals.co.nz

To register: email RSVP@davisfunerals.co.nz - Supplying vehicle year and make.



WE'RE YOUR COMPANY CAR & FLEET SPECIALISTS

At KAAR, we appreciate the inefficiencies of managing your company's vehicles. We know that if the company vehicle is unavailable it's certainly unproductive.

Wondering
what constitutes a
fleet? Call KAAR
now and ask!
0800 522 734



PROBLEMS YOU MAY HAVE FACED SERVICING THE COMPANY CAR

- ✗ Dropping off and picking up, takes two of your team.
- ✗ Company sales calls, deliveries & pickups may be impacted.
- ✗ Excessive Admin, multiple suppliers (brands)
- ✗ Costs – one rule for all (drivers independently managing service routines)
- ✗ Dilemma of who to call when a vehicle has broken down.

SOLUTIONS KAAR CAN PROVIDE FOR YOU

- ✓ Gain control - negotiate your service agreement and fleet rate!
- ✓ KAAR is approved by lease companies.
- ✓ KAAR provides free pickup and delivery.
- ✓ KAAR can assist with Free Loan vehicles; Cars or Vans.
- ✓ KAAR has a Mobile Service available, which includes Breakdowns.
- ✓ KAAR's Fleet rate applies to your staff!

Contact kelvin@kaar.co.nz to book an appointment and become part of the KAAR-munity.



Find us at: KAAR Avondale 357 Rosebank Road | KAAR Mitsubishi 14 Te Pai Place | KAAR Henderson 5B Waipareira Ave

HAS NZ SLIPPED ON EVS?

Courtesy EVs & BEYOND

...Article continued from page 26.

Bikes and parts just can't be made fast enough. Cities are helping by establishing separate pathways for e-bikes, e-scooters, and the like. It's not yet summer but I counted more than 15 bikes (mostly electric) at just one set of lights while on my e-bike commute along the North-western cycleway in Auckland.

Speaking of infrastructure, ChargeNet NZ must be commended for stepping up and ensuring EV chargers are available from one end of the country to the other. Without that, people would be reticent about buying or driving an EV, largely because of range anxiety - fear of running out of battery power.

EVs need all the encouragement they can get (including using special lanes). Labour and the Green Party have established an agreement on confidence and supply which includes boosting sustainable transport, a probably revamped Clean Car Standard, and more.

As managing editor of EVs and Beyond Richard Edwards says: "The inclusion of the Clean Car Standard into the

agreement between Labour and the Greens means a whole lot of pain and paperwork for the automotive trade. Things are about to get ugly.

"It is clear the trade is tooling up for a fight. But it is a fight that does not need to happen. Both the government and trade organisations appear to agree that we need to move to a cleaner fleet. It is the tools to get there that matter.

"The standard is an emissions trading scheme with extra steps. It does nothing to encourage buyers to make the right choices. James Shaw, Michael Wood - if you are listening, dump it and work with the trade on a feebate scheme that works for everyone.

"Drive Electric chair Mark Gilbert says New Zealand needs to get on with the job of transitioning to e-mobility.

Hopefully, we'll learn more from the government soon.

Geoff Dobson, Editor - EVs and BEYOND



Kia E-Niro West City Kia

<p>2020 MITSUBISHI ECLIPSE CROSS ...the wait is OVER!! INSTORE NOW</p> <p>1.5L Turbo, Forward Collision Mitigation, 8" Smartphone Link Display Audio System</p> <p>\$35,990 + ORC 4yr/60,000km with 10% deposit & Guaranteed Future Value of \$17,092.90 : \$125 per week GST inc.</p> 	<p>S-CROSS PRESTIGE 1.4T 2WD AUTO</p> <p>Economical and Peppy SUV. Push Button Start and Keyless Entry, Leather Trim, 17" Polished Alloys, Rear Sensors, LED Lights, Privacy Glass, 5yr Warranty & Roadside, Reverse camera, Sat Nav, USB Charging, Bluetooth, Paddle Shifters, AppleCarplay and AndroidAuto. 5.9L/100km. Save up to \$1000.00!</p> <p>\$32,990 + ORC Weekly repayments from \$141.00 per week</p>  <p>Save \$1,000</p>	<p>2020 KIA STONIC SUV</p> <p>• 5 Year / 100,000Kms Warranty • 5 Year Roadside Assist • 4 Year/60,000Kms Kia Confidence Finance Term • 10% Deposit</p> <p>From \$21,990 RRP + ORC From \$86 per week</p> 
<p>2020 MITSUBISHI EXPRESS VAN</p> <p>Diesel Turbo in Automatic or Manual, safety features like ABS braking, reversing camera and much more - making it a perfect office on the go.</p> <p>INTRODUCTORY OFFER</p> <p>FROM \$34,990 + GST + ORC 4yr/60,000km with 10% deposit & Guaranteed Future Value of \$19,675.90 : \$135 per week GST inc.</p> 	<p>SWIFT GL 1.2L Manual/Auto</p> <p>Small and Eco Hatchback. NZ #1 hatch, Reverse camera (auto only), Day time running lights, Sat Nav (Auto only), USB Charging, Bluetooth, Cruise Control, AppleCarplay and AndroidAuto (Auto only), 5yr Warranty & Roadside, 4.7L/100km</p> <p>NEW for 2020</p> <p>\$20,750 + ORC Weekly repayments from \$89.00 per week</p> 	<p>2020 KIA SORENTO</p> <p>• 5 Year / 100,000Kms Warranty • 5 Year Roadside Assist • 3 year/100,000km Service Plan • 4 Year/60,000Kms Kia Confidence Finance Term • 10% Deposit</p> <p>From \$59,990 RRP + ORC From \$207.46 per week</p> 
<p>West City MITSUBISHI MOTORS</p> <p>MITSUBISHI SALES 130-134 CENTRAL PARK DRIVE, HENDERSON PHONE 837 0907</p>	<p>West City SUZUKI</p> <p>SUZUKI SALES 48 NORTHSHORE DRIVE, WESTGATE PHONE 837 0907</p>	<p>West City KIA</p> <p>KIA SALES - 2 LOCATIONS: 48 NORTHSHORE DRIVE, WESTGATE, HENDERSON & 130-134 CENTRAL PARK DRIVE, HENDERSON PHONE 837 0907</p>



COME AND MEET SANTA!

Take your photo with Santa at our brand NEW Santa set. Tell him what's on your Christmas list and enjoy fun for the family while shopping the best of the West!

Receive a FREE Christmas activity pad with every Santa photo purchased (while stocks last)!

For more info and Santa's hours visit the Customer Service desk or www.west-city.co.nz



7 Catherine Street
Henderson, Auckland
+64 9 978 6700
www.west-city.co.nz

WestCity
WAITAKERE



WestCity
WAITAKERE

A GIFT FOR YOU



STUCK FOR CHRISTMAS GIFT IDEAS?

A WestCity Gift Card is the perfect gift for all occasions. Gift Cards are available from the Customer Service Desk and can be loaded with any amount from \$10 - \$999. The Gift Cards can be used at any participating store within WestCity – so there's something to please everyone this Christmas.



www.west-city.co.nz

+64 9 978 6700

7 Catherine Street, Henderson, Auckland

WestCity
WAITAKERE